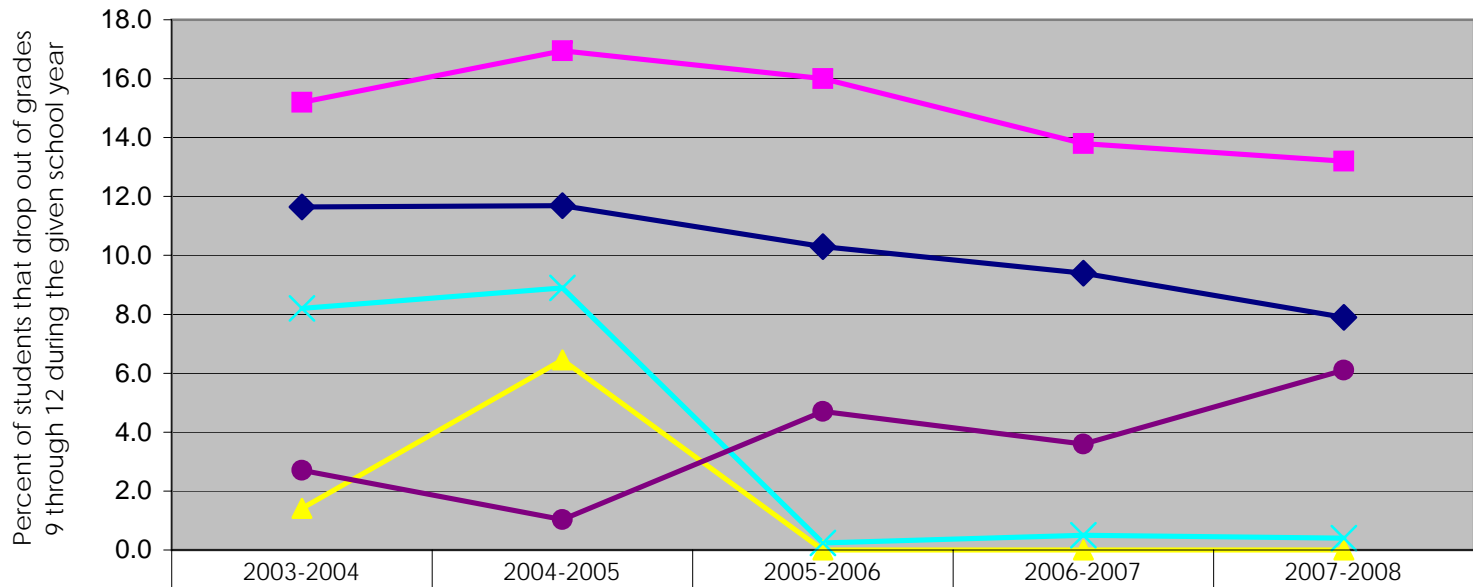


## Dropout Rates for Students Receiving Special Services in Baltimore City 2004-2008



◆ All Baltimore City	11.7	11.7	10.3	9.4	7.9
■ Special Education Students	15.2	17.0	16.0	13.8	13.2
▲ LEP	1.4	6.5	0.0	0.0	0.0
× FARM	8.2	8.9	0.2	0.5	0.4
● Code 504	2.7	1.0	4.7	3.6	6.1

*Note: The dropout rate represents the percent of students dropping out of school in grades 9 through 12 in a single year. This includes the percentage of students who leave school for any reason, except death, before graduation or completion of a Maryland approved educational program and who are not known to enroll in another school or state-approved program during the current school year. The year is defined as July through June and includes students dropping out over the summer and students dropping out of evening high school and other alternative programs.*

*Code 504 students have a mental or physical impairment that substantially limits one or more major life activities.*